



# ROSEWELL HOUSE CONNECT BUSINESS PARK EDINBURGH

# FLOORPLANS



angela.lowe@eur.cushwake.com  
stewart.mcmillan@eur.cushwake.com



peter.ianson@ryden.co.uk  
iain.taylor@ryden.co.uk



A DEVELOPMENT BY SCOTMID PROPERTY

The Agents for themselves and for the vendors or lessors of this property whose agents they are give notice that: (i) the particulars are set out as a general outline only for the guidance of the intended purchasers or lessees and do not constitute, nor constitute part of, an offer or contract; (ii) all descriptions, dimensions, reference to condition and necessary permissions for use and occupation, and other details are given without responsibility and any intending purchasers or tenants should not rely on them as statements or representations of fact but must satisfy themselves by inspection or otherwise as to the correctness of each of them; (iii) no person in the employment of the Agents has any authority to make or give any representations or warranty whatever in relation to this property. March 2012.

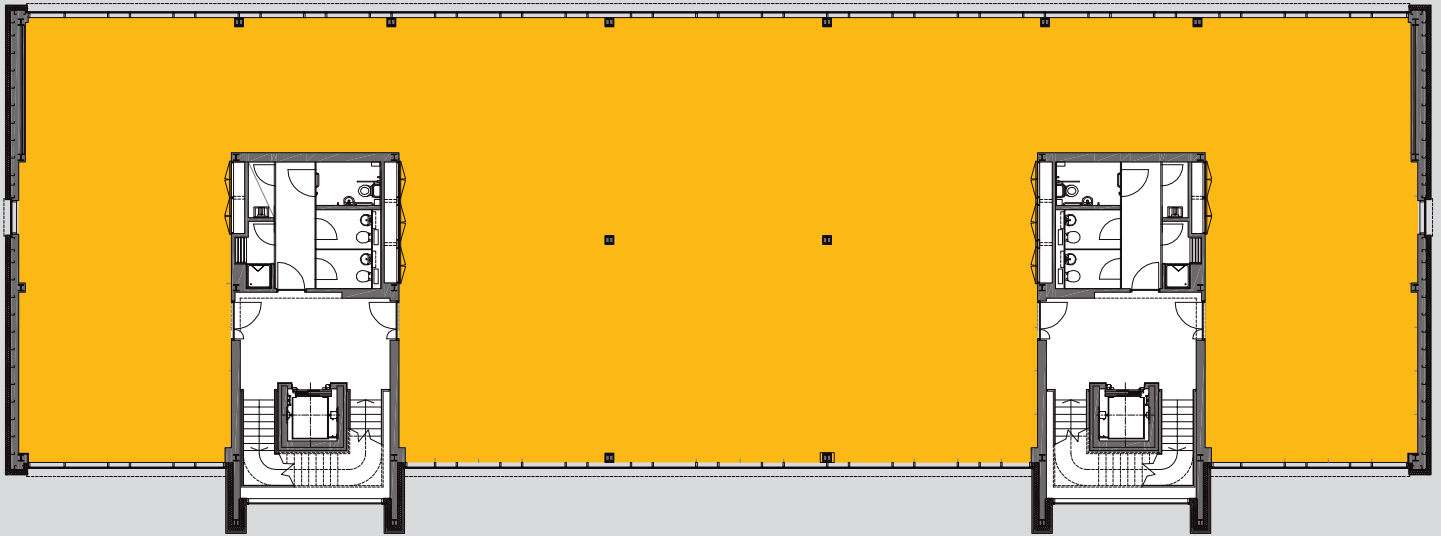
# If you need flexible options... Make a connection.

## FULL ACCOMMODATION

DESCRIPTION	*SQM	*SQFT	AVAILABILITY
SECOND FLOOR	606	6,519	LET TO RSP CONSULTING ENGINEERS & DRAMBUIE
FIRST FLOOR	608	6,539	TO LET
GROUND FLOOR	604	6,506	LET TO DIET CHEF
<b>TOTAL</b>	<b>1,818</b>	<b>19,565</b>	

\* Approximate net internal area

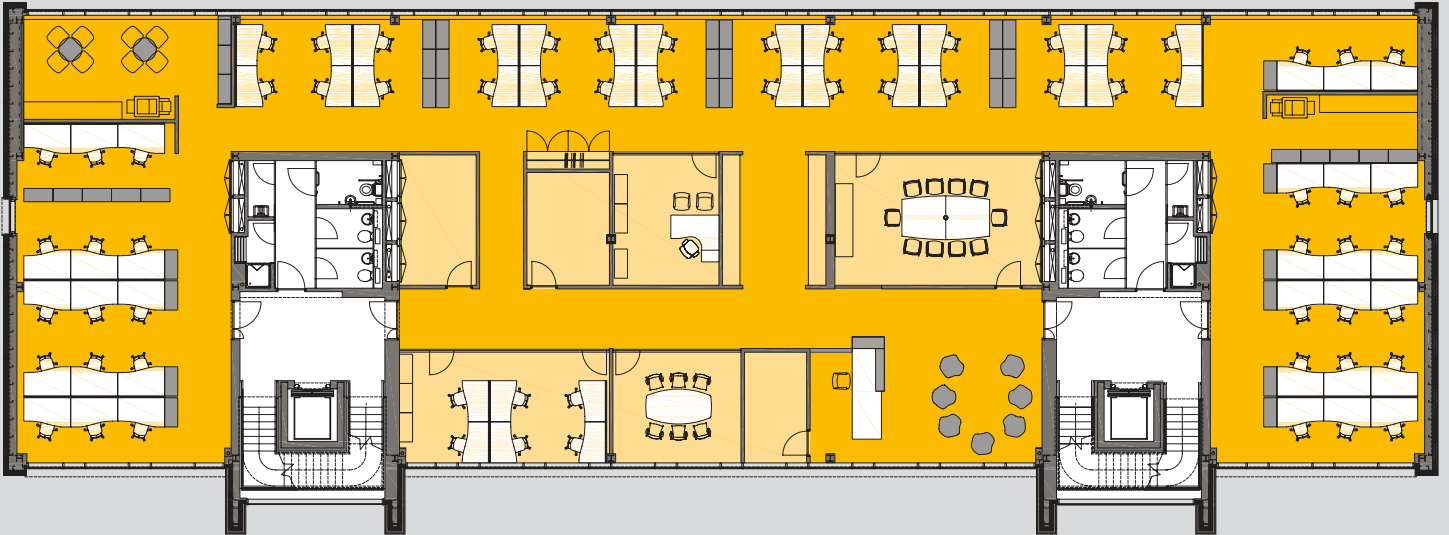
## TYPICAL FLOORPLAN



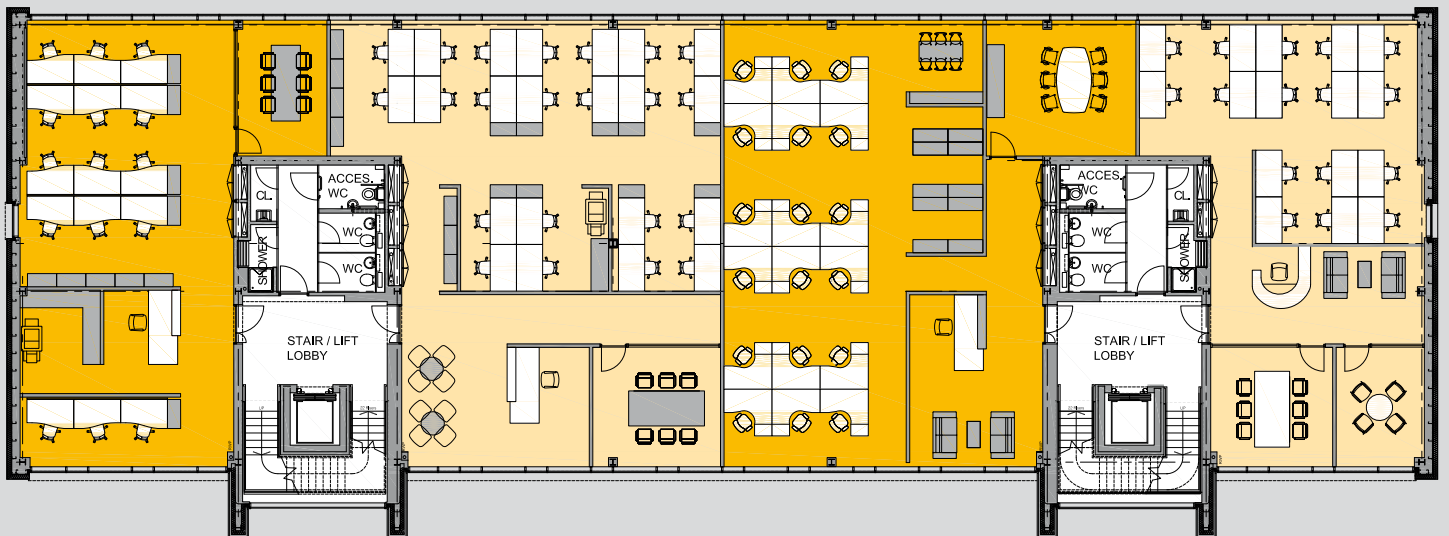
**FIRST FLOOR: 608 sqm (6,539 sqft)**

# If you need flexible options... Make a connection.

## SPACE PLANNING OPTIONS



## TYPICAL SPACE PLANNING OPTION - 61 OPEN PLAN WORKSTATIONS

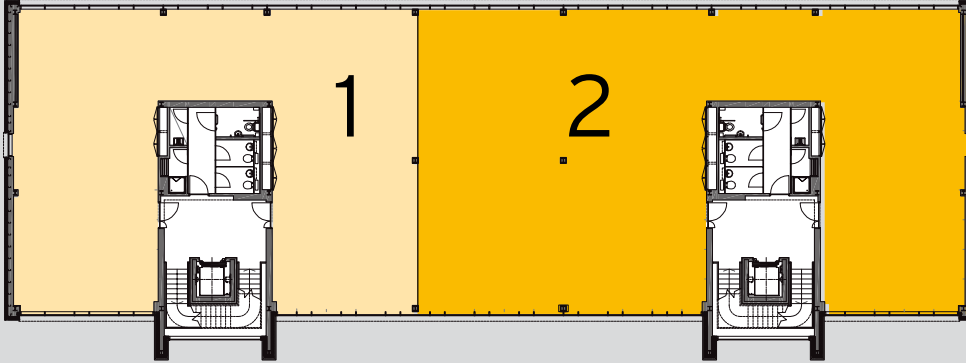


## TYPICAL SPACE PLANNING FOR 4 OCCUPANTS

# If you need flexible options... Make a connection.

## FLEXIBLE OPPORTUNITIES

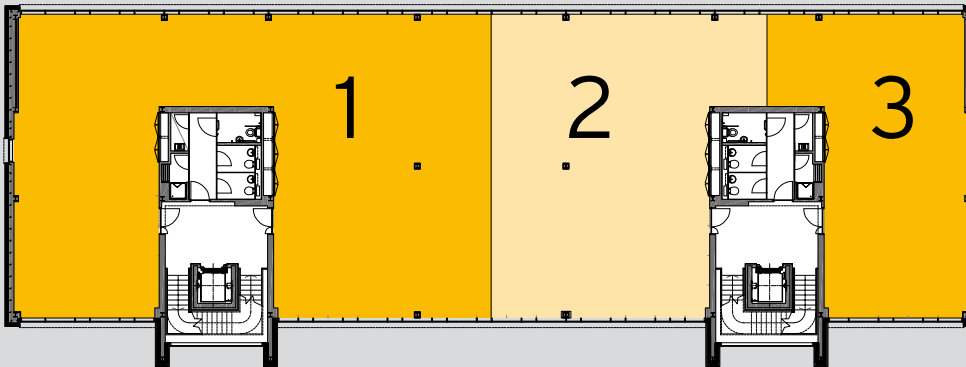
SAMPLE SUB-DIVISIONS OPTIONS FOR THE FIRST FLOOR ARE ILLUSTRATED BELOW:



### OPTION 1:

SUITE 1 - 247 sqm (2,657 sqft)

SUITE 2 - 361 sqm (3,882 sqft)

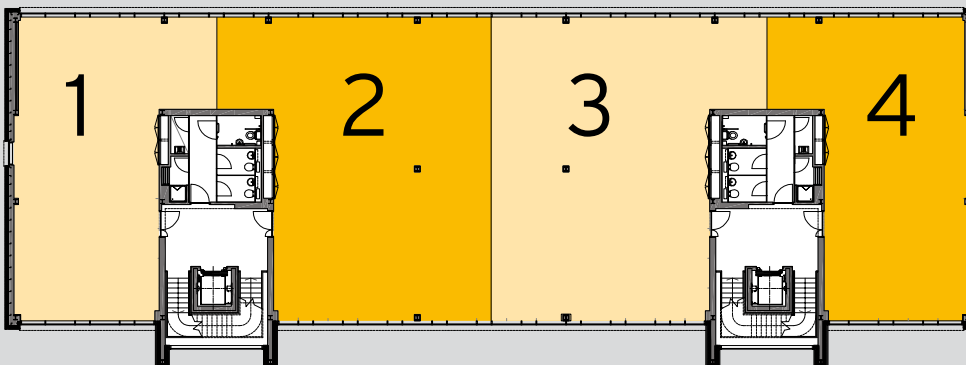


### OPTION 2:

SUITE 1 - 304 sqm (3,268 sqft)

SUITE 2 - 180 sqm (1,934 sqft)

SUITE 3 - 124 sqm (1,337 sqft)



### OPTION 3:

SUITE 1 - 124 sqm (1,333 sqft)

SUITE 2 - 180 sqm (1,935 sqft)

SUITE 3 - 180 sqm (1,934 sqft)

SUITE 4 - 124 sqm (1,337 sqft)